

THE DOOR COLLECTION



THE FRAME

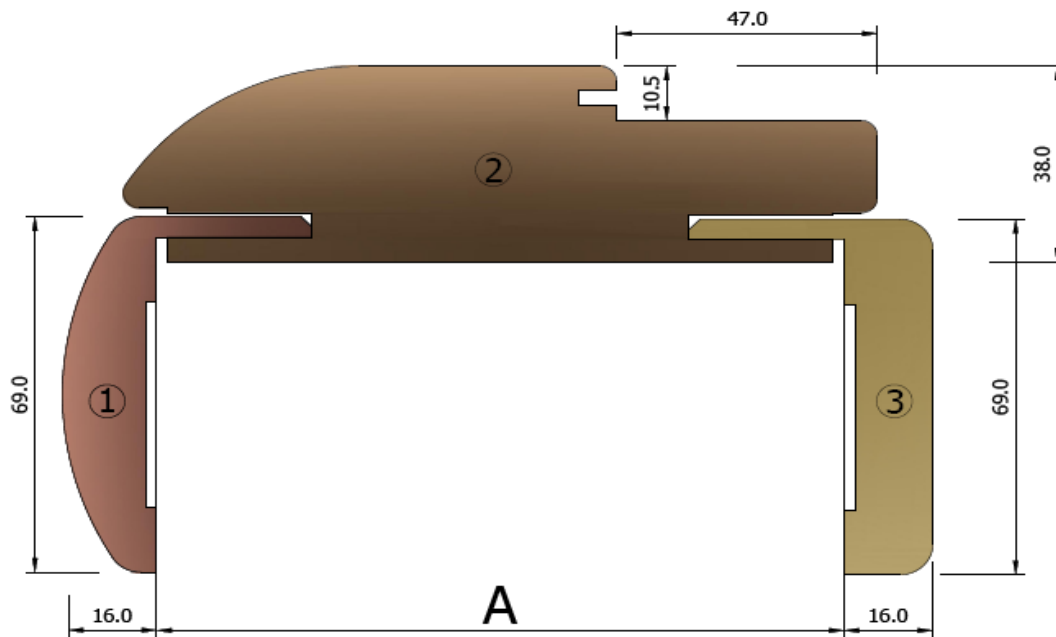


The door frame has very successful combination between elegant design and steady construction. The large tolerance of compensating sills (30 mm) guarantees problem-free assembling even when walls have big deviation. The door frame is produced in six basic dimensions, which makes it appropriate for wall thickness from 85 mm to 215 mm. Door frame is produced in various designs of PP foil and also high gloss white, veneer oak and veneer oak fine line.

The surface structure offers many options of three-dimensional surface design. Besides unspecific structuring such as Stipplelacquers which are particularly suited for the design of single-color surfaces there exist a great number of décor-specific structurings such. The Finish Foil is made of pre-impregnated papers. The coating of the foil consists of solvent-free lacquer, curing is done using the environment-friendly EBC technology. Also available are surfaces with an acid-hardening, thermal-drying coating. The resulting surfaces are flexible as well as light- and chemical-resistant ranging from standard to nonstandard with a wide variety of structurings. The wooden structure is available only with wear resistances. The Structure Finish Foil is mostly used in the wood working industry for the surface finishing of particle boards as well as MDF and HDF boards. Bonding is usually made using either urea-resin or PVAc glue.



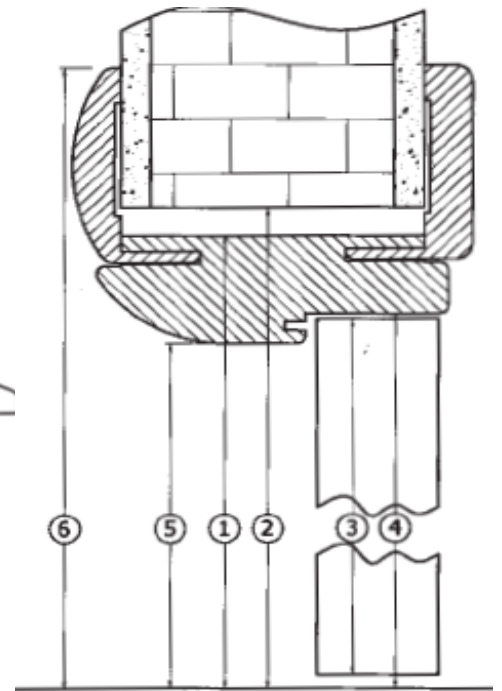
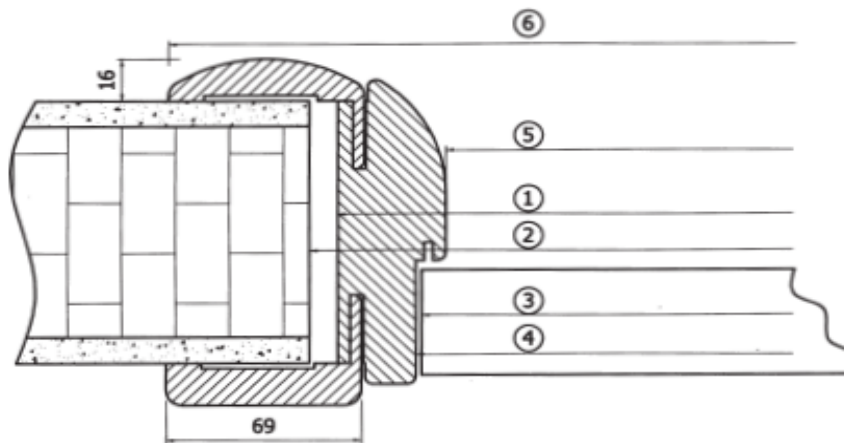
THE FRAME



Door frame type	Allowable tolerances in mm.
1	85 - 110
2	105 - 125
3	125 - 155
4	145 - 175
5	165 - 195
6	185 - 215



THE DOOR LEAVE



	Frame dim 1	Structural opening 2	Door leave 3	Rebation dim 4	Clear opening 5	Architrave dim 6
width	600	625	538	544	524	722
	650	675	588	594	574	772
	700	725	638	644	624	822
	800	825	738	744	724	922
	900	925	838	844	824	1022
height	2000	2015	1964	1972	1962	2061
	2050	2065	2014	2022	2012	2111
	2100	2115	2064	2072	2062	2161

* Other dimension are available on request

* By ordering the type of architraves (round or flat) must be specified

* Round architraves only mitred connection

* Flat architraves straight connection standard vertical 16 mm., horizontal 10 mm., mitred upon request

THE DOOR LEAVE



The construction of wooden door leave 40 mm. thickness consists of hardwood interior framing, filled with honeycomb paper core or tubular chipboard. The surface is flush veneered or laminated MDF face.

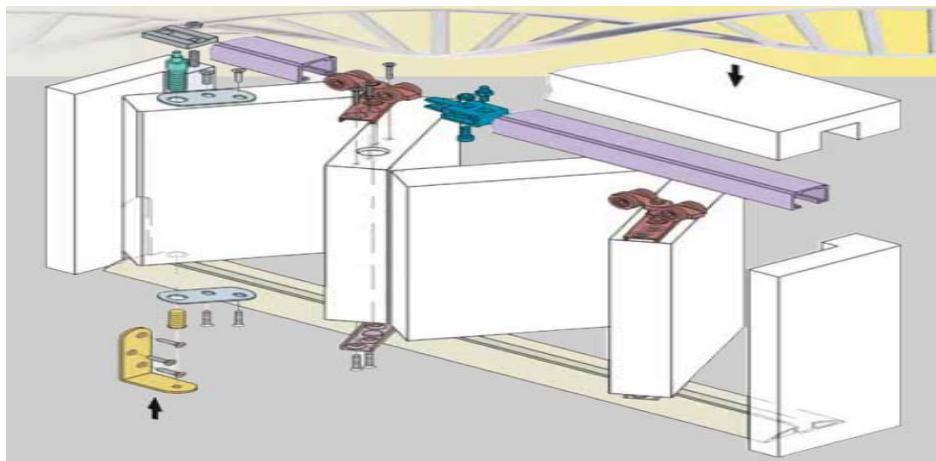


The glass door leave is 10 mm. tempered glass, fixed to the surrounding frame with heavy duty hinges with the required capacity and durability. There are numerous varieties of type of glass, colour, surface finishing, design, etching according to the architectural idea and customers requirements.

SLIDING DOORS



FOLDING DOORS



SECURITY DOORS



FIRE RATED DOORS



REI 60

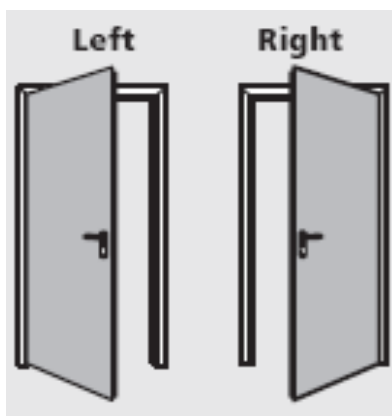


REI 120

- * Suitable for all wall types
- * Made of hot-galvanized sheet metal, "Sendzimir" processed
- * Painted with epoxy-polyester thermoset powders in a 180 degrees (Celsius) oven
- * Customizable with wide selection of RAL colors
- * Wide variety of dimensions
- * Fire testing in accordance with UNI 9723 and EN 1634-1
- * Mechanical testing for the CE marking of accessories
- * Careful selection of materials and manufacturing methods
- * Nr. 2 three-wing hinges for each leaf
- * Reversible locking mechanism with bolt and central latch for REI60 and REI 120 doors
- * Fire rated handle in black plastic with steel core



Opening direction



NODOOR



NOFRAME

